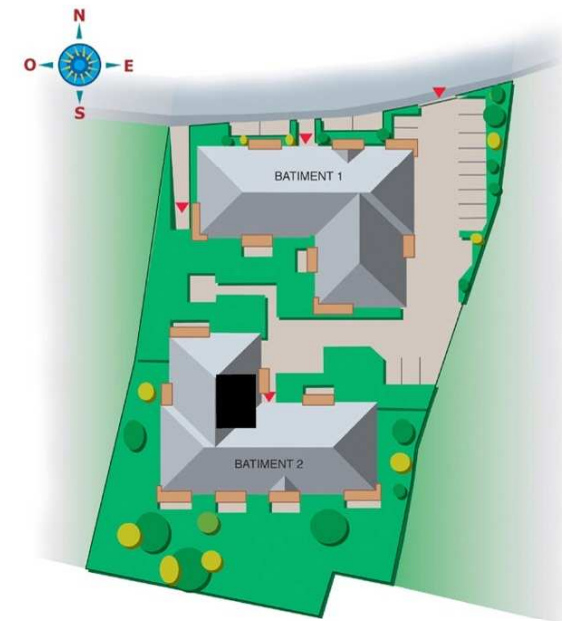
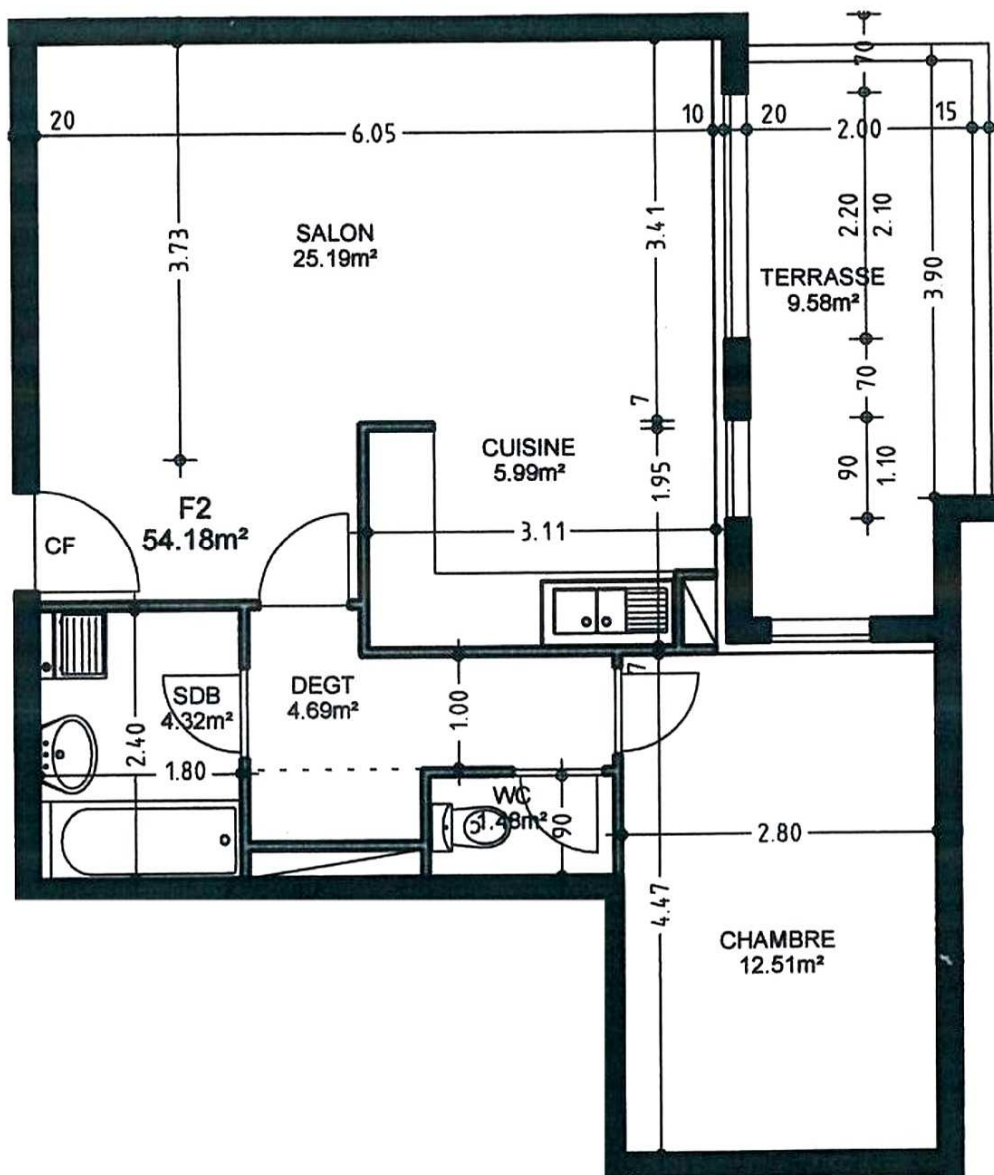


TURENNE PROMOTION

DOMAINE DE L'ERMITAGE

32 rue de l'ermitage - 67700 SAVERNE



BÂTIMENT	ETAGE	N°	TYPE
2	1	18	T2

SURFACES

DEGAGEMENT	4,69 m ²
CUISINE	5,99 m ²
SALON	25,19 m ²
CHAMBRE	12,51 m ²
WC	1,48 m ²
SDB	4,32 m ²
TOTAL SURFACE HABITABLE	54,18 m²
TERRASSE	9,58 m ²